

Tondo orientabile - Round adjustable

P.145

- Materiale - Material**
secondo codice - according to item code
- Colore - Colour**
secondo codice - according to item code
- Pezzi confezione - Package items**
100 pezzi - pieces
- Volume e dimensioni confezione - Package volume and size**
24,3 dm³ - 400 X 280 X 200 mm
- Peso confezione - Package weight**
secondo codice - according to item code

SPO Ricambi - Spare parts

★ Accessori - Accessories

Sezione utile passaggio aria - Open air flow section: 2.280 mm²

Temp. di esercizio - Working temp. -10/+120 °C (14/248 °F)

LEX Normative - Norms R107.8; R118.3; FMVSS 302; ISO 3795; REACH; ROHS; CMR. More info on page C2-C3 and website on "Directives and regulations" area.



P.145

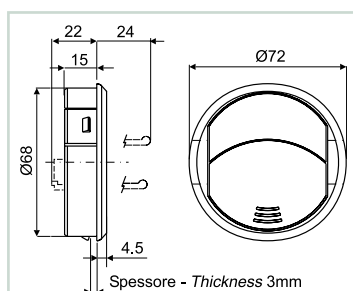
Cod.	Tipo - Type	Colore - Colour	Materiale - Material		
61819	1	nero - black	Poliammide + fibra vetro - Glass fibre polyamide	2.750	
61839	1	grigio - grey Ral 7043	Poliammide + fibra vetro - Glass fibre polyamide	2.750	
62892	1	grigio - grey Ral 7006	Poliammide + fibra vetro - Glass fibre polyamide	2.750	500
63119	1	grigio - grey Ral 7004	Poliammide + fibra vetro - Glass fibre polyamide	2.750	500
61829	1	nero - black	Poliammide VO + fibra vetro - Glass fibre polyamide VO*	2.750	3000
61849	1	grigio - grey Ral 7043	Poliammide VO + fibra vetro - Glass fibre polyamide VO*	2.750	3000
62292	2	nero - black	Poliammide + fibra vetro - Glass fibre polyamide	3.000	
69945	2	grigio - grey Ral 7043	Poliammide + fibra vetro - Glass fibre polyamide	3.000	
68431	2	grigio - grey Ral 7037	Poliammide + fibra vetro - Glass fibre polyamide	3.000	500
63109	2	grigio - grey Ral 7004	Poliammide + fibra vetro - Glass fibre polyamide	3.000	500
65021	2	grigio - grey Ral 7001	Poliammide + fibra vetro - Glass fibre polyamide	3.000	500
68097	2	nero - black	Poliammide VO + fibra vetro - Glass fibre polyamide VO*	3.000	3000
66731	2	anello nero, farfalle grigie black ring, grey flap Ral 7001	Poliammide + fibra vetro - Glass fibre polyamide	3.000	1000

*Auto-estinguente - Self-extinguishing

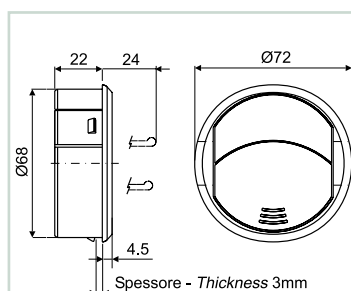
lotto minimo d'acquisto - minimum purchasing lot

Sezione tecnica - Technical section

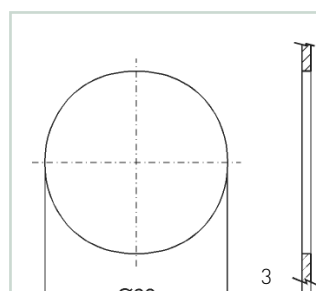
P.145



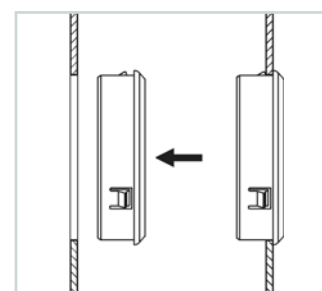
tipo - type 1



tipo - type 2



dima di foratura e fissaggio
drilling and fixing template



a scatto nella dima
on release into the presetted template