

# Serratura - Key lock

## P.53

**Materiale - Material**  
**P.53** Serratura e statore in Zama zincata, cornice in PA6 -  
 Lock and stator in plated aluminium alloy, PA6 frame  
**P.53J** Acciaio - Steel

**Pezzi confezione - Package items**  
 50 pezzi - pieces

**Volume confezione - Package volume**  
**P.53** = 12,7 dm<sup>3</sup> - **P.53J** = 7 dm<sup>3</sup>

**Peso confezione - Package weight**  
**P.53** = 4.050 g - **P.53J** = 2.400 g

**SPO Ricambi - Spare parts only**  
 vedi sez. tecnica - see technical section

**★ Accessori - Accessories**  
 vedi sez. tecnica - see technical section

**Carico di rottura a 20°C - Breakup load at 20°C**  
 -

**Temp. di esercizio - Working temp.**  
 -10/+120 °C

**LEX Normative - Norms**  
 R107.8; R118.3; FMVSS 302; ISO 3795; REACH (SCIP number key P.73 at page A4-A5); ROHS; CMR.  
 More info on page A4-A5 and website on "Directives and regulations" area.



P.53			P.53			P.53			P.53		
↔ <sup>2</sup>	Cod.		↔ <sup>2</sup>	Cod.		↔ <sup>2</sup>	Cod.		↔ <sup>2</sup>	Cod.	
A1 - 137	67397		A11 - 156	61968		A21 - 511	64218		A31 / A36		
A2 - 146	68847		A12 - 142	61978		A22 - 512	64228		A37 - 527	68061	
A3 - 150	68857		A13 - 503	64138		A23 - 513	64238		A38 - 528	68071	
A4 - 124	68867		A14 - 504	64148		A24 - 514	64248		A39 - 529	68081	
A5 - 501	68877		A15 - 505	64158		A25 - 515	64258		A40 - 530	68091	
A6 - 502	68887		A16 - 506	64168		A26 - 516	64268		A41 - 145		
A7 - 250	68897		A17 - 507	64178		A27 - 517	64278		A42 - 152	60791	
A8 - 262	68907		A18 - 508	64188		A28 - 518	64288		A43 - 147	68653	
A9 - 269	68917		A19 - 509	64198		A29 - 519	65408		A44 - 149	63161	
A10 - 278	68927		A20 - 510	64208		A30 - 520	65418		A45 - 148	66631	

↔<sup>2</sup> versione con serratura, chiave rimovibile con maniglia chiusa e aperta  
 version with lock, removable key with both locked and unlocked handle

## P.53J

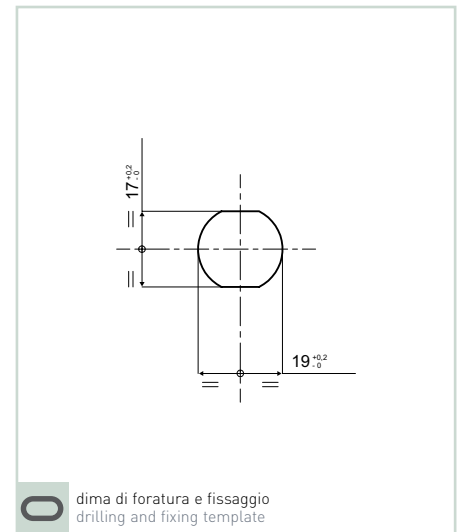
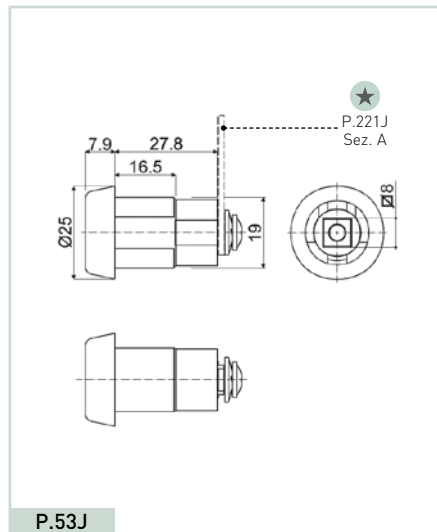
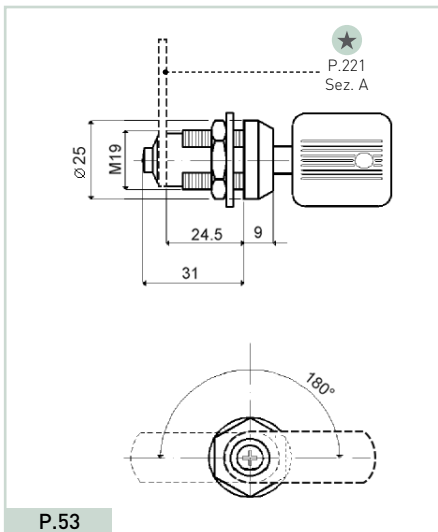
P.53J			
Cod.	↔ <sup>1</sup>	↔ <sup>2</sup>	✂
65639			J2*
68541			J2**

\*Rotazione 0° - 180° - Rotation 0° - 180°

\*\*Rotazione 0° - 90° - Rotation 0° - 90°



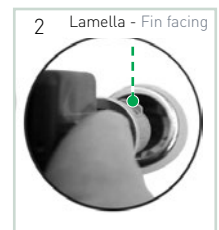
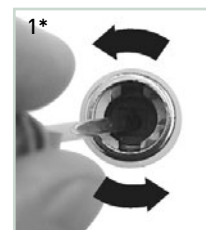
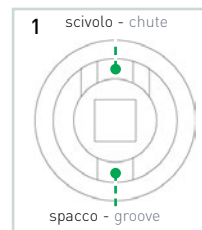
## P.53 - P.53J



### ■ Inserimento - Assembly P.474 for J2 Cod. 65639

- 1 Verificare corretta posizione dello scivolo (con l'eccentrico a fine corsa Sx)
- 1\* Se non OK, ruotare in senso anti-orario "l'eccentrico" sul fondo dello statore sino a fine corsa
- 2 Inserire la serratura con la lamella rivolta verso lo scivolo (ulteriori info pag.A3), previo ingrassaggio preliminare - Chiave removibile con serratura a 0° e 180°

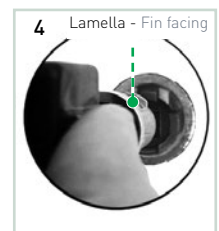
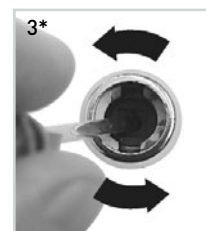
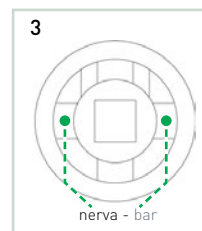
- 1 Verify the correct position of the chute (with eccentric stroke end Lhs)
- 1\* If not OK, turn the "eccentric" in the bottom of stator, in anti-clockwise until it rest
- 2 Insert the lock as shown with the fin facing the chute (more info page A3), after preliminary greasing - Removable key with lock at 0° and 180°



### ■ Inserimento - Assembly P.474 for J2 Cod. 68541

- 3 Verificare corretta posizione dello scivolo (con l'eccentrico a fine corsa Sx)
- 3\* Se non OK, ruotare in senso anti-orario "l'eccentrico" sul fondo dello statore sino a fine corsa
- 4 Inserire la serratura con la lamella rivolta verso lo scivolo (ulteriori info pag.A3), previo ingrassaggio preliminare - Chiave removibile con serratura a 0° e 90°

- 3 Verify the correct position of the chute (with eccentric stroke end Lhs)
- 3\* If not OK, turn the "eccentric" in the bottom of stator, in anti-clockwise until it rest
- 4 Insert the lock as shown with the fin facing the chute (more info page A3), after preliminary greasing - Removable key with lock at 0° and 90°



### ■ Esempi d'applicazione - Examples of application

